

# DIAPHRAGM PUMPS

www.secohdily.cz



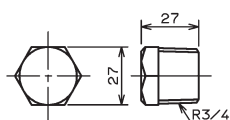
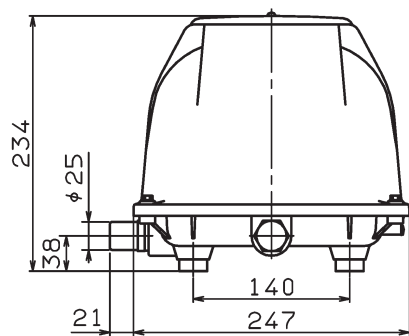
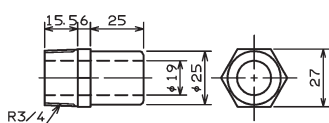
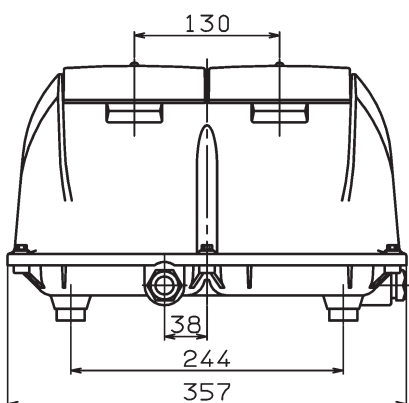
## EL-S Serie twin system

EL-S-120W / EL-S-150W / EL-S-200W  
EL-S-250W / EL-S-300W

### Product characteristics

- Integrated overload protection
- Protective switch inclusive
- Optional with fault alarm lamp or signal cable
- Twin outlet for alternative port position

### Dimensions



### Technical data

Model			EL-S-120W	EL-S-150W	EL-S-200W	EL-S-250W	EL-S-300W
Air flow <sup>1)</sup>	l/min	0 mbar	240	290	330	360	400
		50 mbar	215	250	270	320	380
		100 mbar	185	218	250	290	350
		150 mbar	156	196	225	262	310
		200 mbar	127	165	196	233	—
		250 mbar	95	135	170	205	—
Voltage <sup>2)</sup>	V		230				
Power consumption	W	200 mbar	120	149	210	241	320
Noise level	dB(A)		43	44	45	55	60
Dimensions	mm	L x W x H	268.5 x 357 x 234				
Connection	mm	Ø outside	25	25	25	25	25
Net weight	kg		16	16	16	16	16.5

<sup>1)</sup> Product performance may vary +/- 10% from performance curves

<sup>2)</sup> Values at 50 Hz

### Performance data

Optimal operating span

